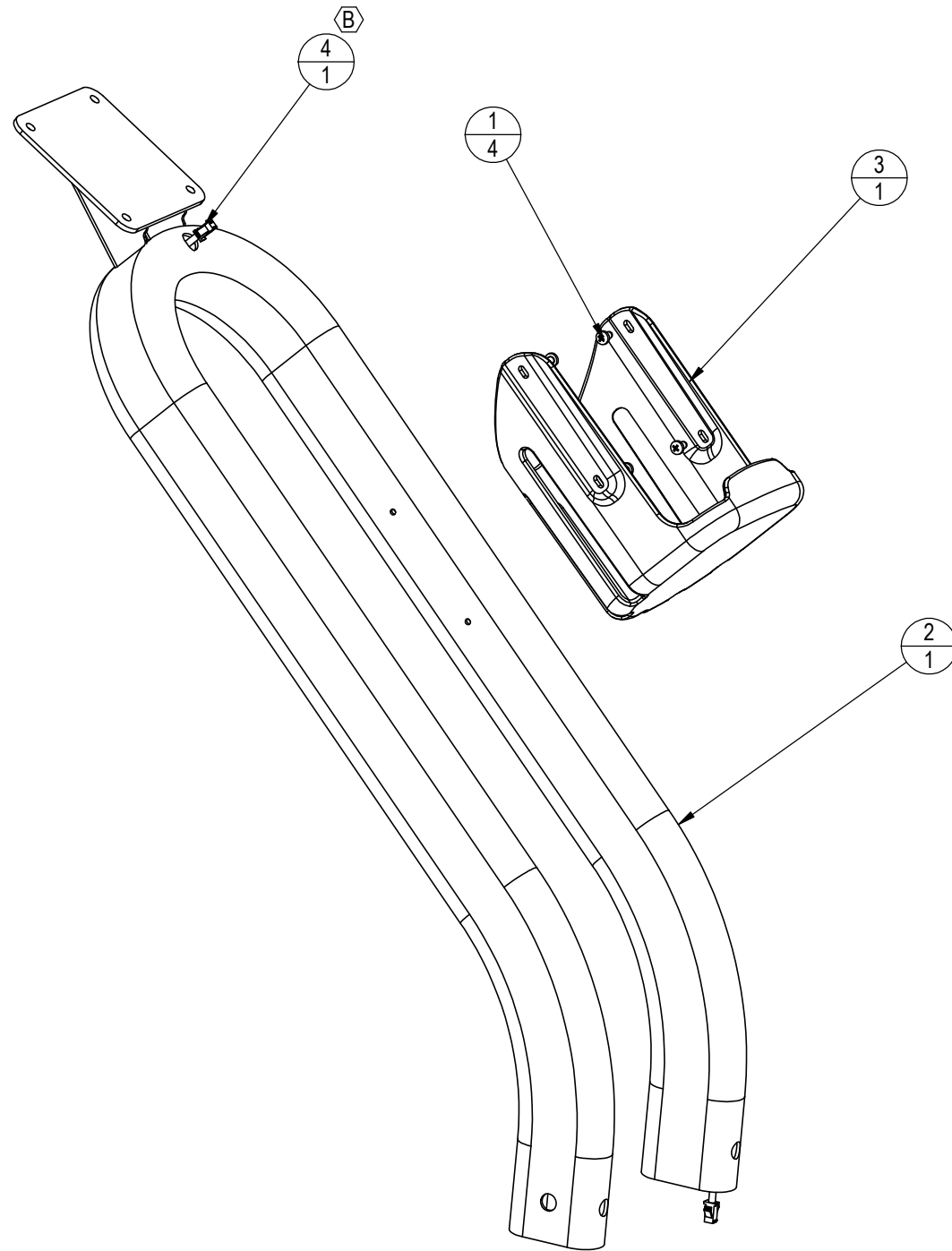


NOTES:
 1. COLOR DESIGNATION PER-XX SPECIFIED IN SOP 620-8222 UNLESS OTHERWISE NOTED

REVISION HISTORY				
REV	DATE	DESCRIPTION	ECO	BY
A	12/19/2013	PRODUCTION RELEASE	14455	VC
B	5/9/2014	ADDED 718-5563	14667	VC



ITEM NO.	PART NUMBER	DESCRIPTION	QTY.
1	110-3581	SCREW, 4.2M X 8, BHC, PH	4
2	718-5455-XX	ASSY, WELD, DISPLAY, TURBO	1
3	718-5495	Holder, Water bottle, turbo	1
4	718-5563	CABLE, NECK, DISPLAY, AIR BIKE	1

DOCUMENT STATUS:

NOTICE OF PROPRIETARY INFORMATION
 THIS DOCUMENT SHALL NOT BE REPRODUCED NOR SHALL THE INFORMATION CONTAINED HEREIN BE USED BY OR DISCLOSED TO OTHER EXCEPT AS EXPRESSLY AUTHORIZED BY CORE HEALTH & FITNESS, LLC.

CLASS OF WORK	UNLESS OTHERWISE SPECIFIED DIMS ARE IN mm. TOLERANCES FOR MEASURE OF LENGTH ARE:							ANGLES = ±2°
	0.5 to 3	> 3 to 6	> 6 to 30	> 30 to 120	> 120 to 400	> 400 to 1000	> 1000 to 2000	
FINE	±0.05	±0.05	±0.1	±0.15	±0.2	±0.3	±0.5	----
MEDIUM X	±0.1	±0.1	±0.2	±0.3	±0.5	±0.8	±1.2	±2
COARSE	±0.2	±0.3	±0.5	±0.8	±1.2	±2	±3	±4
VERY COARSE	----	±0.5	±1	±1.5	±2.5	±4	±6	±8

MATERIAL	
FINISH	
VENDOR:	P/N:

THIRD ANGLE PROJECTION		
	INITIAL	DATE
DRAWN	VC	
CHECKED		
APPROVED		
	U.O.M.	MM

CORE HEALTH & FITNESS, LLC 4400 NE 77th Ave., Suite 300 Vancouver, WA 98662		
CORE PART NO	REV	
718-5385-XX	B	
TITLE Assy, Display base, Airbike		
SCALE: 1:20	SHEET 1 OF 1	SHEET SIZE: B

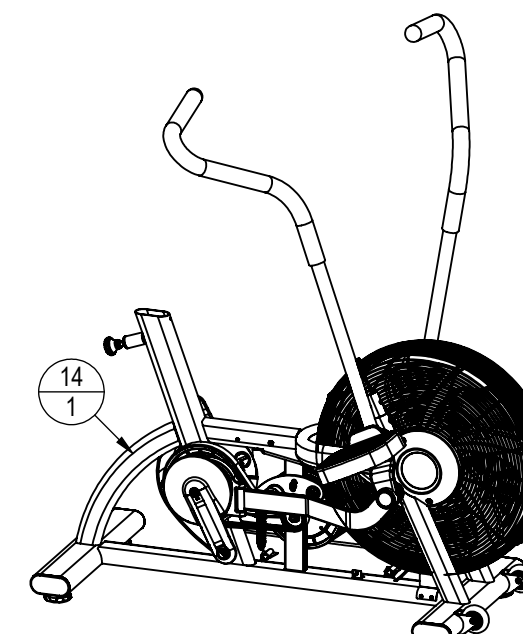
NOTES:

1. COLOR DESIGNATION PER-XX SPECIFIED IN SOP 620-8222 UNLESS OTHERWISE NOTED.

REVISION HISTORY				
REV	DATE	DESCRIPTION	ECO	BY
A	11/27/2013	PART NUMBER RELEASE	14455	VC
B	5/8/2014	DELETED: 718-5460-XX, 718-5461-XX, 718-5465-XX, 110-3584, 718-5387 , 718-5475, 718-5474, 718-5380-XX, 718-5384-XX, 718-5439-XX, 718-4445-XX, 110-3396 , 110-3580, 120-3340, 731-0824 , 731-0570 , 731-5810, 740-4517. ADDED: 110-3601 , 110-3600, 718-5561-XX, 718-5560-XX, 718-5562 , 718-5566XX, 718-5567-XX, 730-1137 , 130-1840 , 731-0379 , 731-0373 , 110-3604, 110-3605 . CHANGE QTY: 740-7187 IS 10 WAS 2. 740-7558 -XX WAS 740-7558 . 740-7850 -XX WAS 740-7850 .	14667	VC

ITEM NO.	PART NUMBER	DESCRIPTION	QTY.	NOTES
1	110-3500	WASHER,M3,PLAIN	4	
(B) 2	110-3600	Screw, M6 X 12MM, BN3873, HSHCS	4	
(B) 3	110-3601	PIN, 10MM OD X 75MM, M6 BOTH ENDS	2	
(B) 4	110-3604	SCREW,4.2M X 19,BHC,PH	1	
(B) 5	110-3605	SCREW, 4.2M X 38MM,PH, CS	5	
6	130-1811	PULLEY, J6, POLY-V, Ø122.5mm BP, OFF-SET, Ø195mm	1	
7	130-1812	BELT, 6PK910, POLY-V	1	
8	130-1814	BELT, 6J460, POLY-V	1	
(B) 9	130-1840	Bearing, 6003-2RS, 17 ID x 35 OD x 10mm	2	
10	140-3542	KEY, PARALLEL, 5mm X 5mm X 10mm	2	
11	140-3554	Retaining, Round Wire, 50 OD X 2.5	2	
12	140-3555	Retaining, Round Wire, 38 OD X 2.5	2	
13	718-5277	NUT, AXLE, B/B, E-/S- BIKE, GEN 2	3	
14	718-5375-XX	WELDMENT, FRAME, TURBO	1	
15	718-5378	ASSY, BOTTOM BACKET, TURBO	1	
16	718-5379	ASSY, SEAT STOP PIN, AirBike	1	
17	718-5382-XX	ASS, CRANK ARM, RIGHT, TURBO	1	
18	718-5383-XX	Assy, Crank Arm, Left, AirBike	1	
19	718-5386-XX	ASSY, GRID, FAN, TURBO	1	
20	718-5387	ASSY, TENSIONER, MAIN, AirBike	1	
21	718-5419	SHAFT, TRANS, TURBO	1	
22	718-5420	PULLEY, K6, POLY-V, Ø60mm	1	
23	718-5422	SPACER, TRANS, TURBO	1	
24	718-5431	BB spacer	1	
25	718-5448-XX	COVER, AXEL, FAN, TURBO	2	
(B) 26	718-5460-XX	GUARD, FAN, LEFT, TURBO	1	
(B) 27	718-5461-XX	GUARD, FAN, RIGHT, TURBO	1	

ITEM NO.	PART NUMBER	DESCRIPTION	QTY.	NOTES
(B) 28	718-5465-XX	KIT,TENSION, GRID, FAN, TURBO	5	
29	718-5478	PLATE, FOOT SUPPORT, AIR BIKE	2	
30	718-5479	SUPPORT, FOOT, TURBO	2	
31	718-5485-XX	SHROUD, RIGHT, TURBO TRAINER	1	
32	718-5486-XX	SHROUD, LEFT, TURBO TRAINER	1	
33	718-5508	ADAPTER, PULLEY, TRANS, TURBO	1	
(B) 34	718-5560-XX	HANDLEBAR, UB, RIGHT, AIR BIKE	1	
(B) 35	718-5561-XX	ASSY, HANDLEBAR, UB, LEFT, AIR BIKE	1	
(B) 36	718-5562	CABLE, SENSOR, DISPLAY, AIR BIKE	1	
(B) 37	718-5566-XX	LINK, UPPER BODY, RIGHT, AIR BIKE	1	
(B) 38	718-5567-XX	LINK, UPPER BODY, LEFT, AIR BIKE	1	
(B) 39	730-1137	SCREW, M8X15, BH, SS	12	
40	731-0225	SCREW,M3.5 X 9.5,SELF TAPPING	4	
41	731-0353	SCREW,M5X0.8,12mm,BHC,HK	8	
42	731-0355	WASHER,PLAIN,M8,NARROW	8	
(B) 43	731-0373	WASHER,PLAIN,M6	12	
(B) 44	731-0379	SCREW,M8 X1.25,20mm,SHC,HK	2	REF
45	731-1222	WASHER, 25OD X 8.5ID X 3T	2	REF
(B) 46	740-7187	SCREW, M6X1.25X10, BHC, HE, SS	10	
47	740-7190	NUT, M12X1.25, FLANGE, HE, CS, BO	2	
48	740-7553	BEARING, 6005 SERIES, 25x47x12, 2RS	2	
(B) 49	740-7558 -XX	END CAP, STABILIZER	4	
50	740-7656	LEVELLING FEET, SPINNER	4	
(B) 51	740-7850 -XX	CAP, PLUG, 38mm OD	2	REF
52	740-7916	M5 X 16MM, DOWEL PIN	2	
53	740-8006	WHEEL, FRONT FOOT, SPINNER	2	
54	740-8007	BOLT, WHEEL, NXT	2	
55	740-8145	BOLT, CRANKARM, M8	2	



DOCUMENT STATUS:

NOTICE OF PROPRIETARY INFORMATION
THIS DOCUMENT SHALL NOT BE REPRODUCED NOR SHALL THE INFORMATION CONTAINED HEREIN BE USED BY OR DISCLOSED TO OTHER EXCEPT AS EXPRESSLY AUTHORIZED BY CORE HEALTH & FITNESS, LLC.

CLASS OF WORK	UNLESS OTHERWISE SPECIFIED DIMS ARE IN mm. TOLERANCES FOR MEASURE OF LENGTH ARE:								ANGLES = ±2°
	0.5 to 3	> 3 to 6	> 6 to 30	> 30 to 120	> 120 to 400	> 400 to 1000	> 1000 to 2000	> 2000	
FINE	±0.05	±0.05	±0.1	±0.15	±0.2	±0.3	±0.5	----	
MEDIUM X	±0.1	±0.1	±0.2	±0.3	±0.5	±0.8	±1.2	±2	
COARSE	±0.2	±0.3	±0.5	±0.8	±1.2	±2	±3	±4	
VERY COARSE	----	±0.5	±1	±1.5	±2.5	±4	±6	±8	

MATERIAL SEE BOM

FINISH SEE NOTES

VENDOR:

P/N:

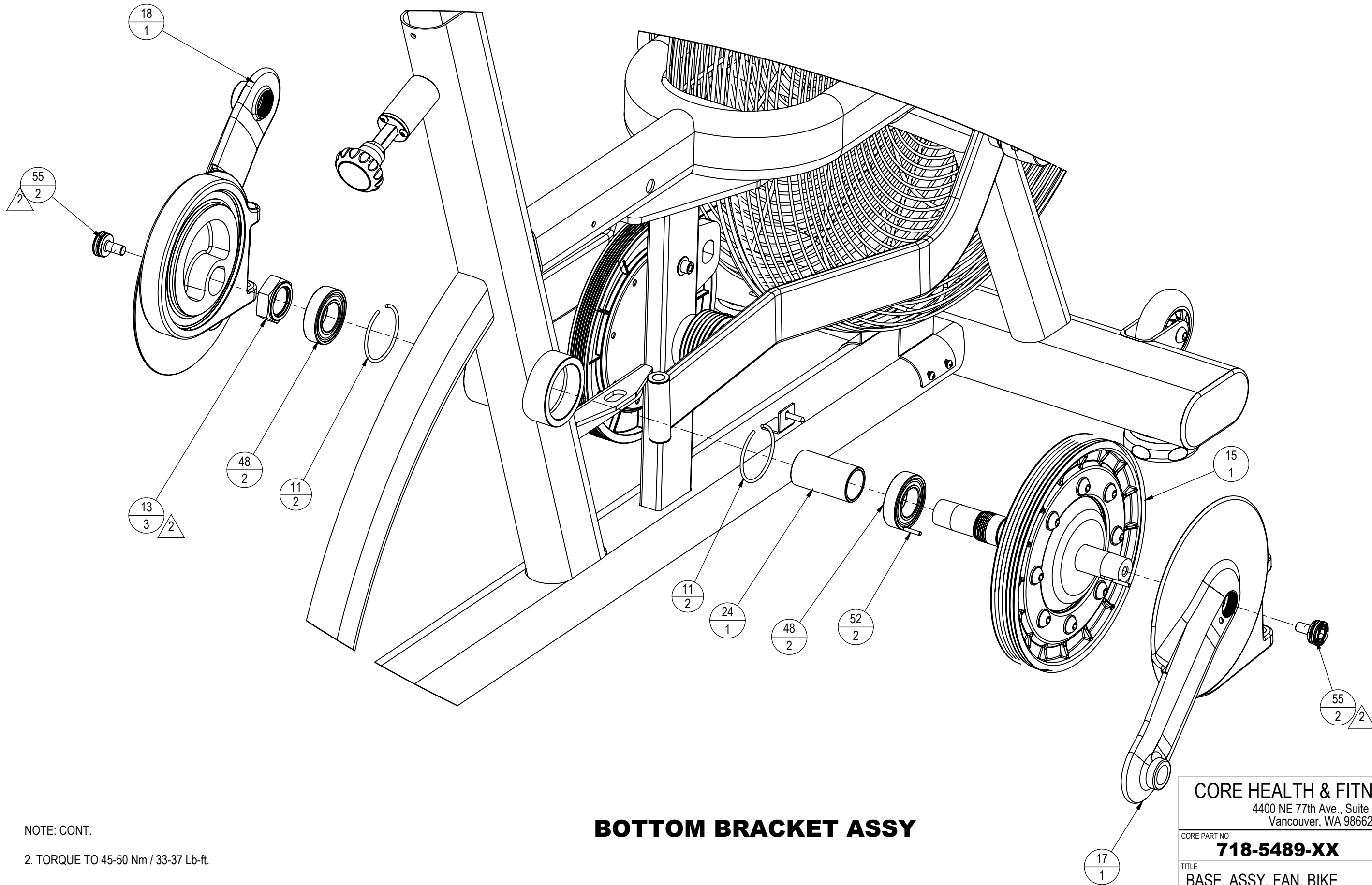
THIRD ANGLE PROJECTION		
DRAWN	INITIAL VC	DATE 10/10/2013
CHECKED		
APPROVED		
	U.O.M.	MM

CORE HEALTH & FITNESS, LLC 4400 NE 77th Ave., Suite 300 Vancouver, WA 98662		
CORE PART NO	REV	
718-5489-XX	B	
TITLE BASE, ASSY, FAN, BIKE		
SCALE: 1:1	SHEET 1 OF 6	SHEET SIZE: B

9 8 7 6 5 4 3 2 1

J I H G F E D C B A

J I H G F E D C B A



NOTE: CONT.
 2. TORQUE TO 45-50 Nm / 33-37 Lb-ft.

BOTTOM BRACKET ASSY

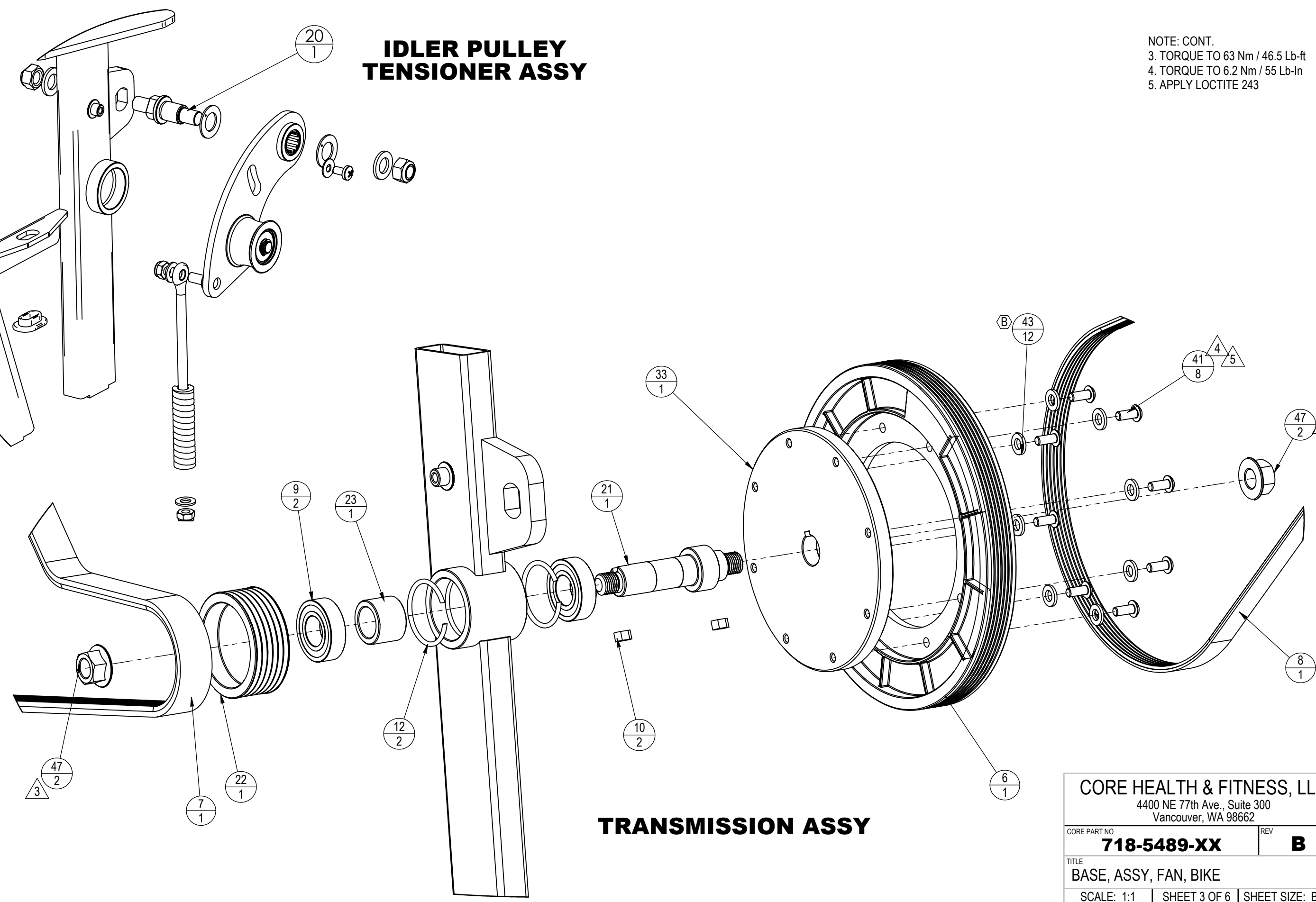
CORE HEALTH & FITNESS, LLC 4400 NE 77th Ave., Suite 300 Vancouver, WA 98662		
CORE PART NO	718-5489-XX	REV B
TITLE BASE, ASSY, FAN, BIKE		
SCALE: 1:1	SHEET 2 OF 6	SHEET SIZE: B

9 8 7 6 5 4 3 2 1

IDLER PULLEY TENSIONER ASSY

NOTE: CONT.
 3. TORQUE TO 63 Nm / 46.5 Lb-ft
 4. TORQUE TO 6.2 Nm / 55 Lb-in
 5. APPLY LOCTITE 243

TRANSMISSION ASSY

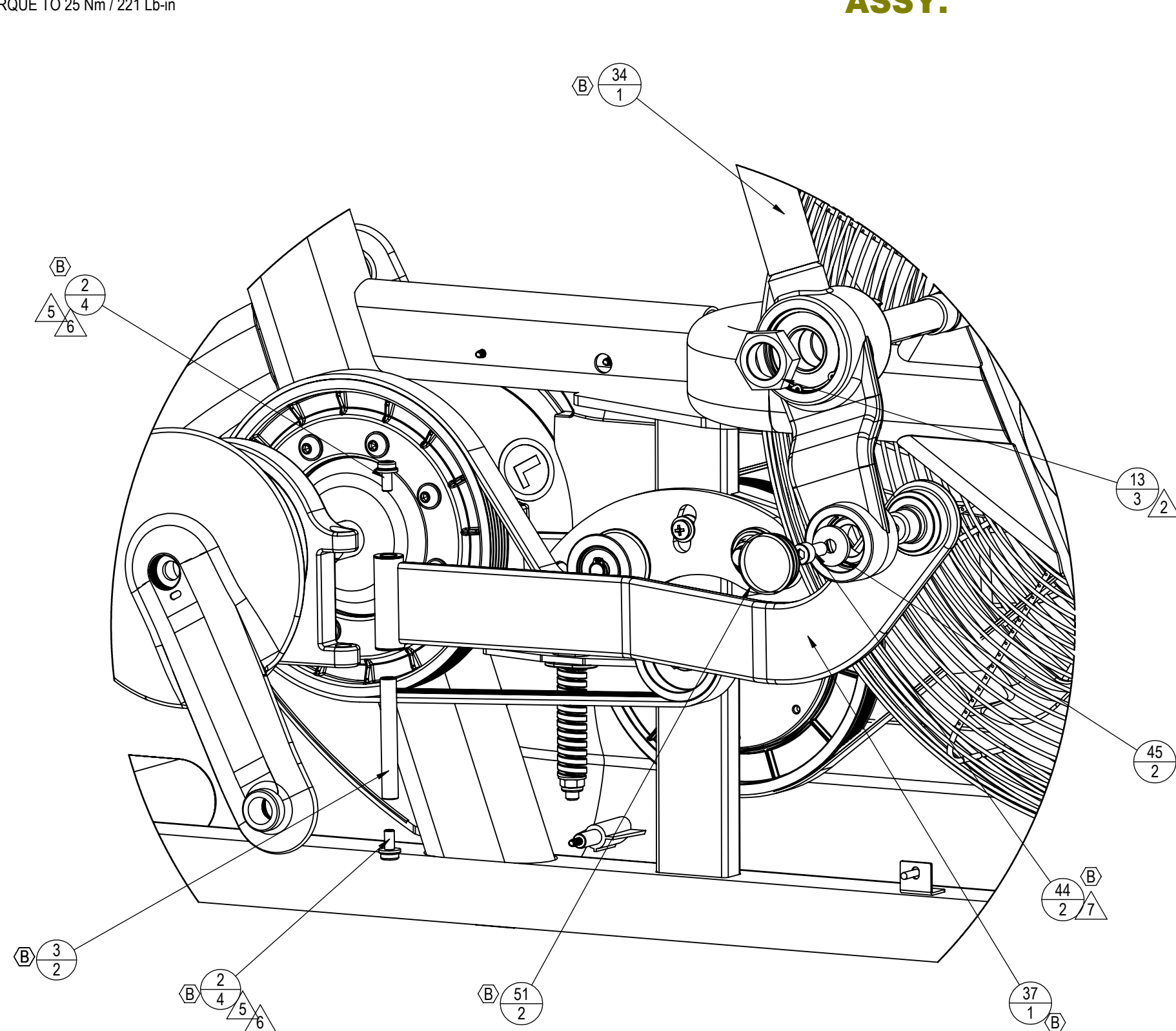


CORE HEALTH & FITNESS, LLC	
4400 NE 77th Ave., Suite 300 Vancouver, WA 98662	
CORE PART NO	REV
718-5489-XX	B
TITLE	
BASE, ASSY, FAN, BIKE	
SCALE: 1:1	SHEET 3 OF 6 SHEET SIZE: B

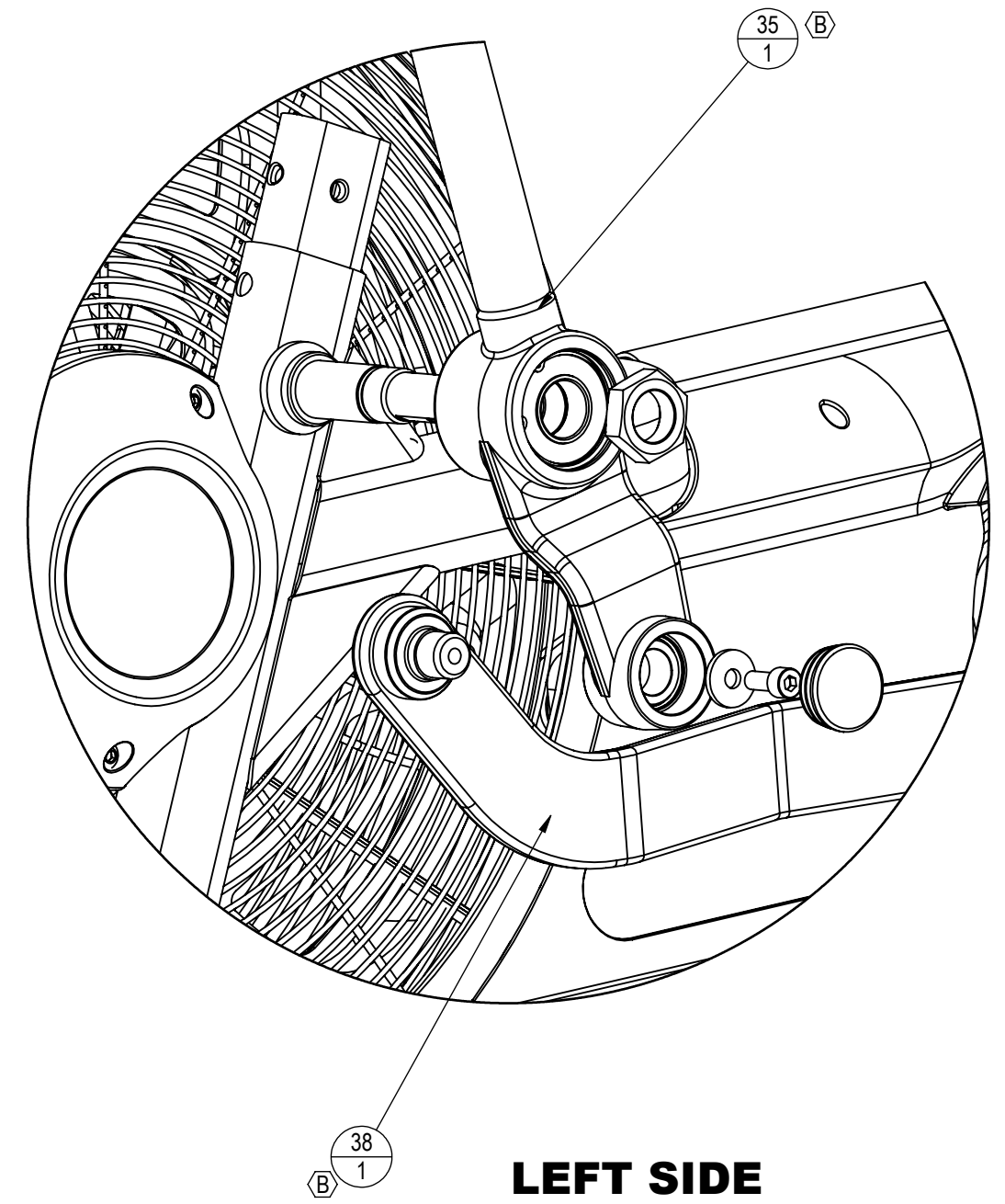
NOTE: CONT.

6. TORQUE TO 12 Nm / 106 Lb-in
7. TORQUE TO 25 Nm / 221 Lb-in

UPPER BODY - LINKAGE ASSY.



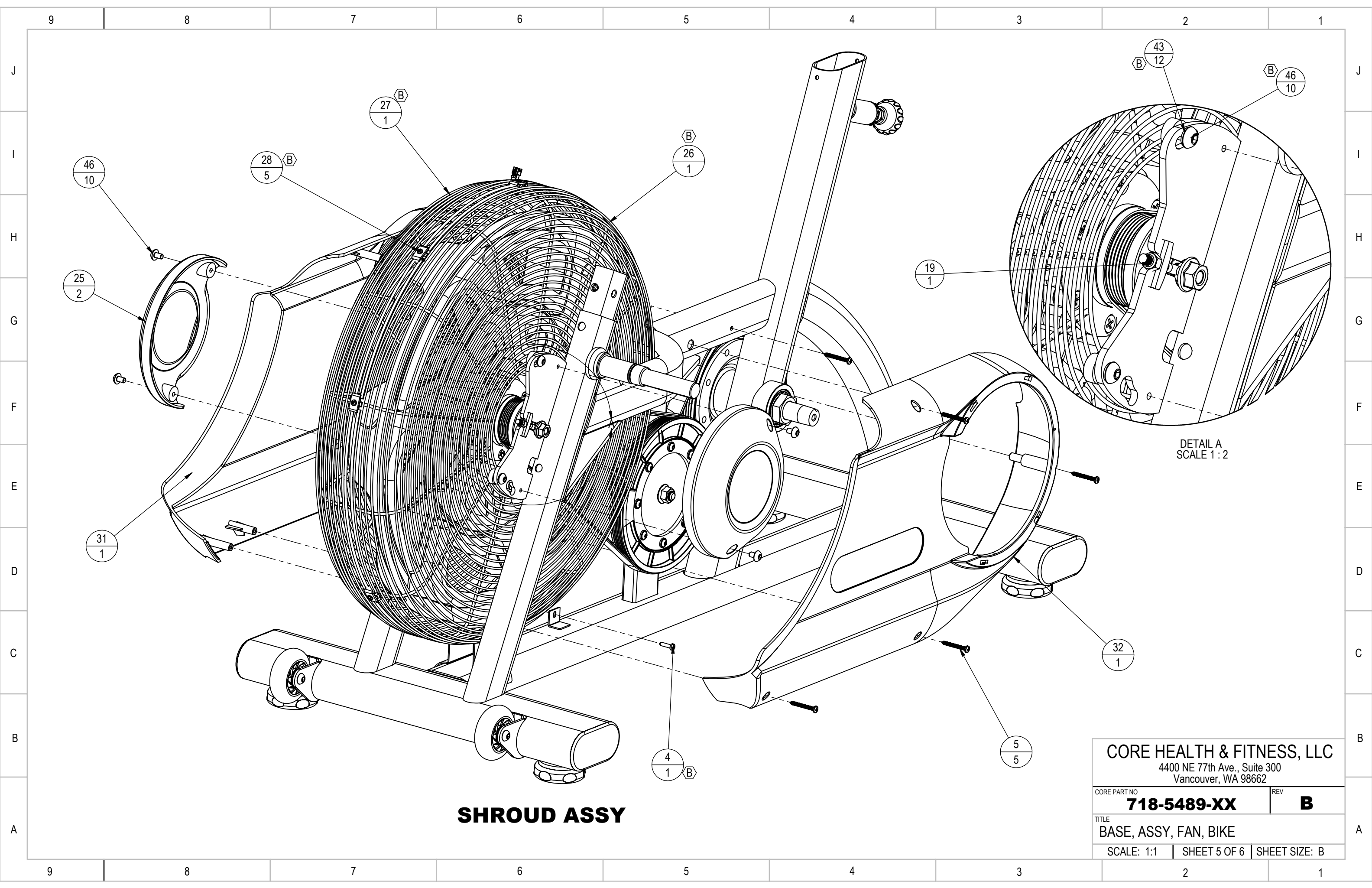
RIGHT SIDE



LEFT SIDE

CORE HEALTH & FITNESS, LLC
4400 NE 77th Ave., Suite 300
Vancouver, WA 98662

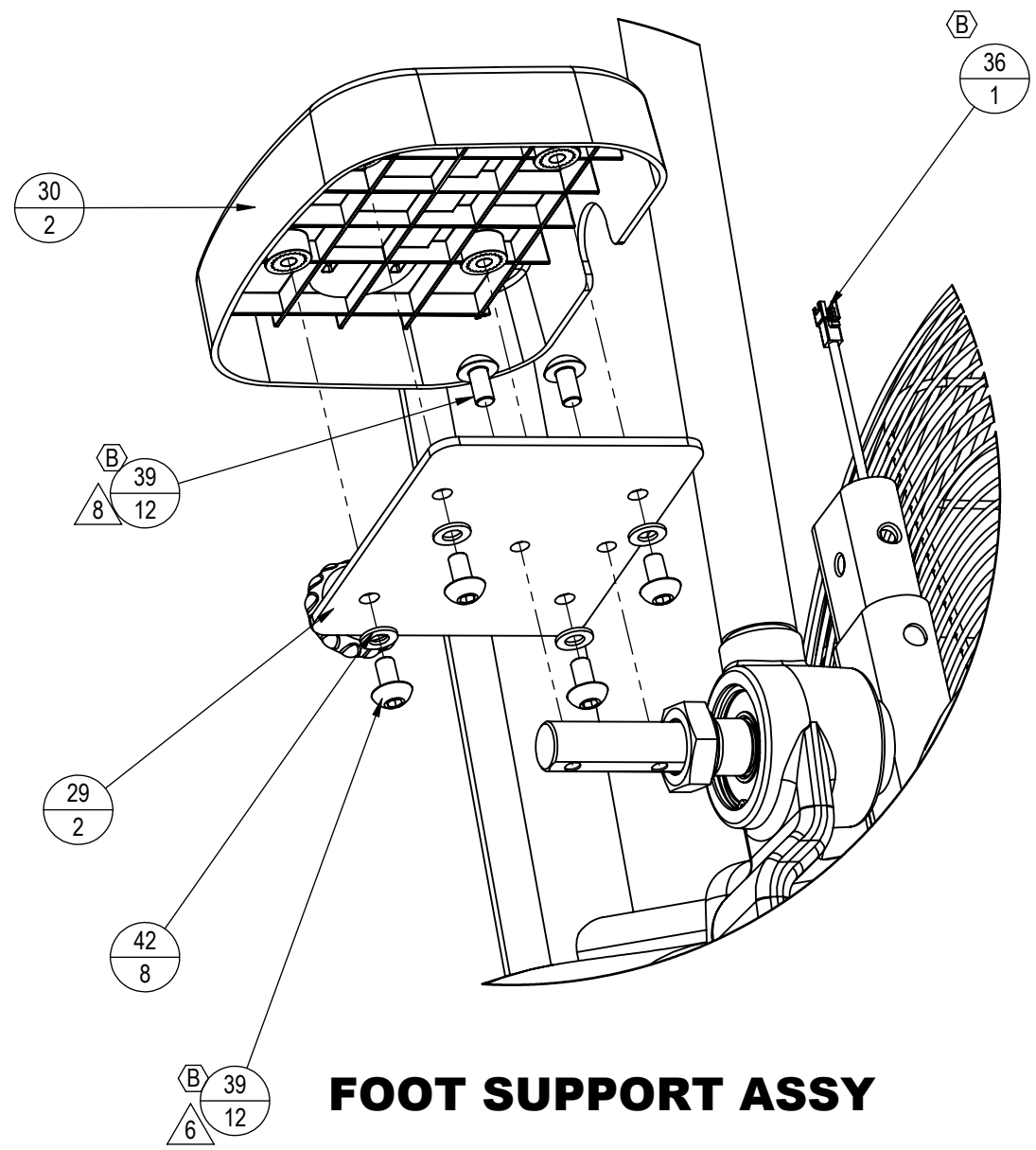
CORE PART NO	718-5489-XX	REV	B
TITLE	BASE, ASSY, FAN, BIKE		
SCALE: 1:1	SHEET 4 OF 6	SHEET SIZE: B	



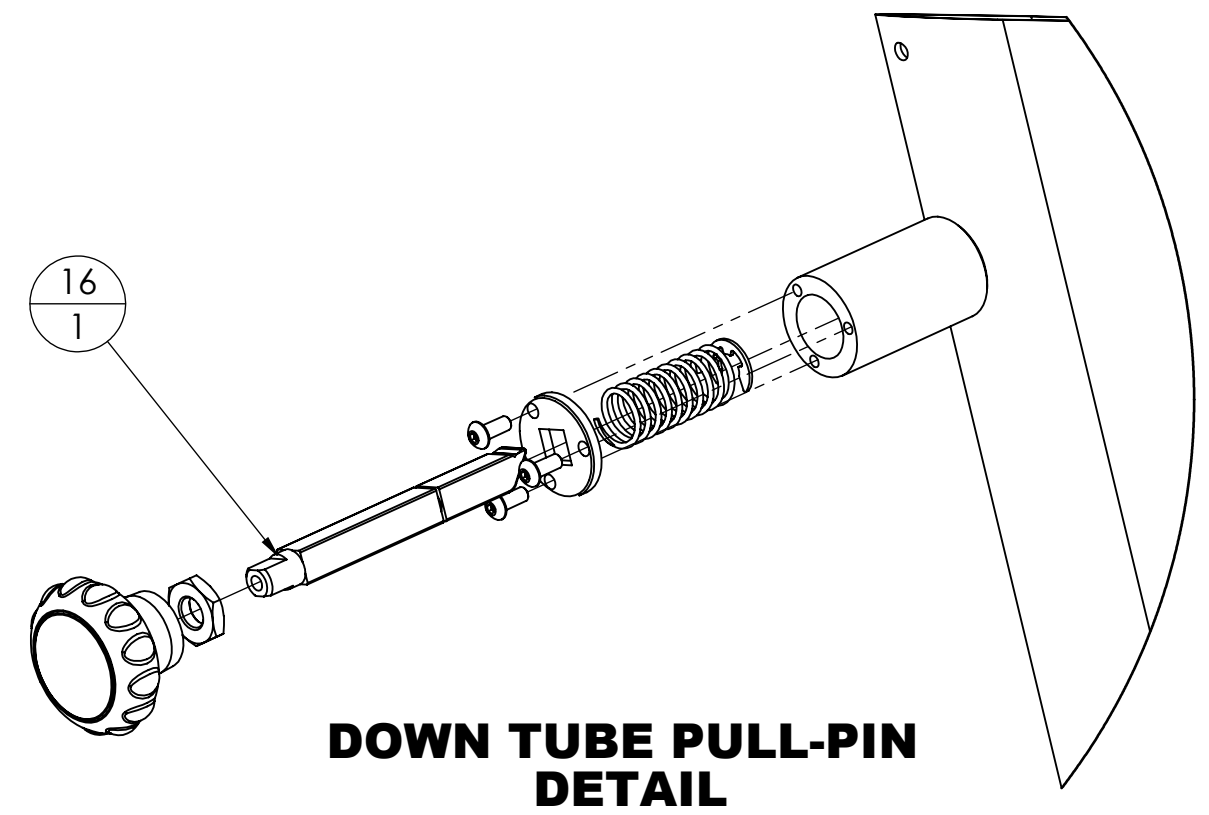
DETAIL A
SCALE 1 : 2

SHROUD ASSY

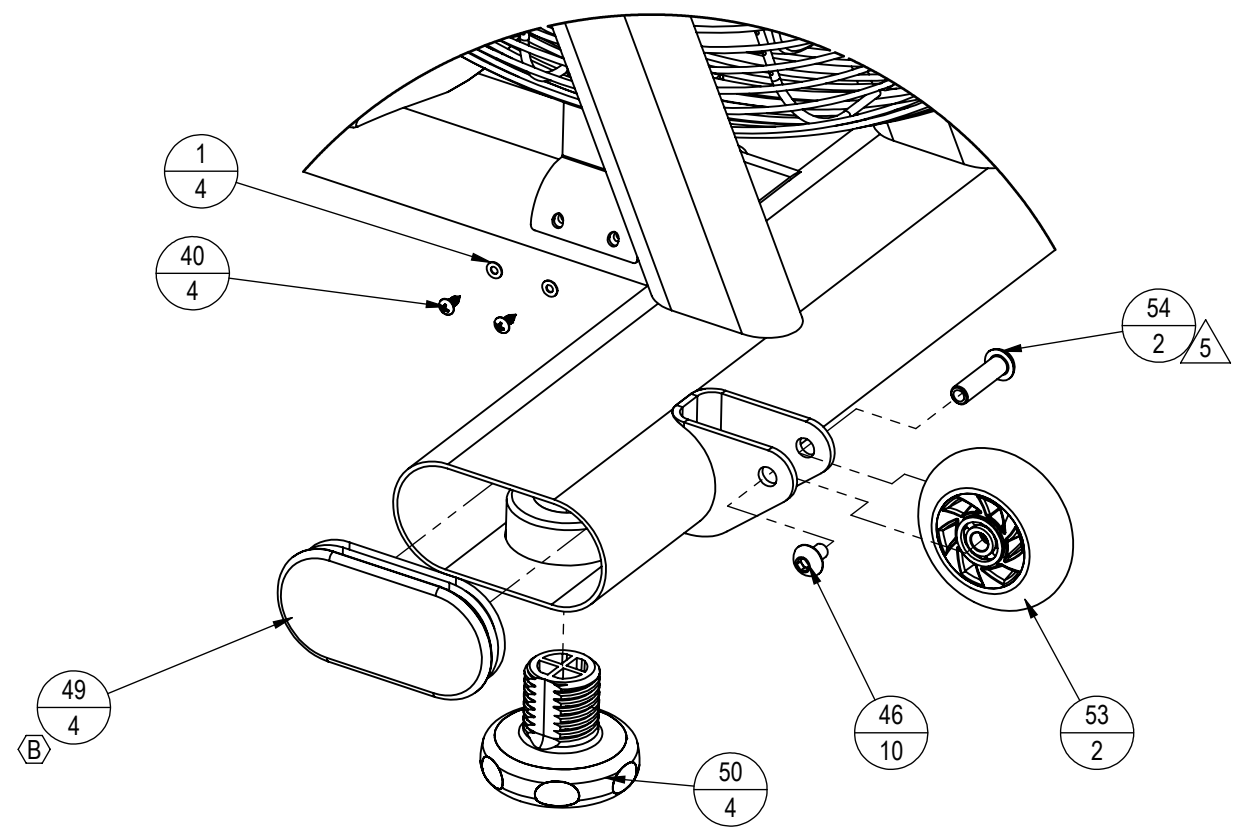
<p>CORE HEALTH & FITNESS, LLC 4400 NE 77th Ave., Suite 300 Vancouver, WA 98662</p>		
<p>CORE PART NO 718-5489-XX</p>	<p>REV B</p>	
<p>TITLE BASE, ASSY, FAN, BIKE</p>		
<p>SCALE: 1:1</p>	<p>SHEET 5 OF 6</p>	<p>SHEET SIZE: B</p>



FOOT SUPPORT ASSY



**DOWN TUBE PULL-PIN
DETAIL**



**ENDCAP, ADJ FEET, WHEELS
DETAIL VIEW**

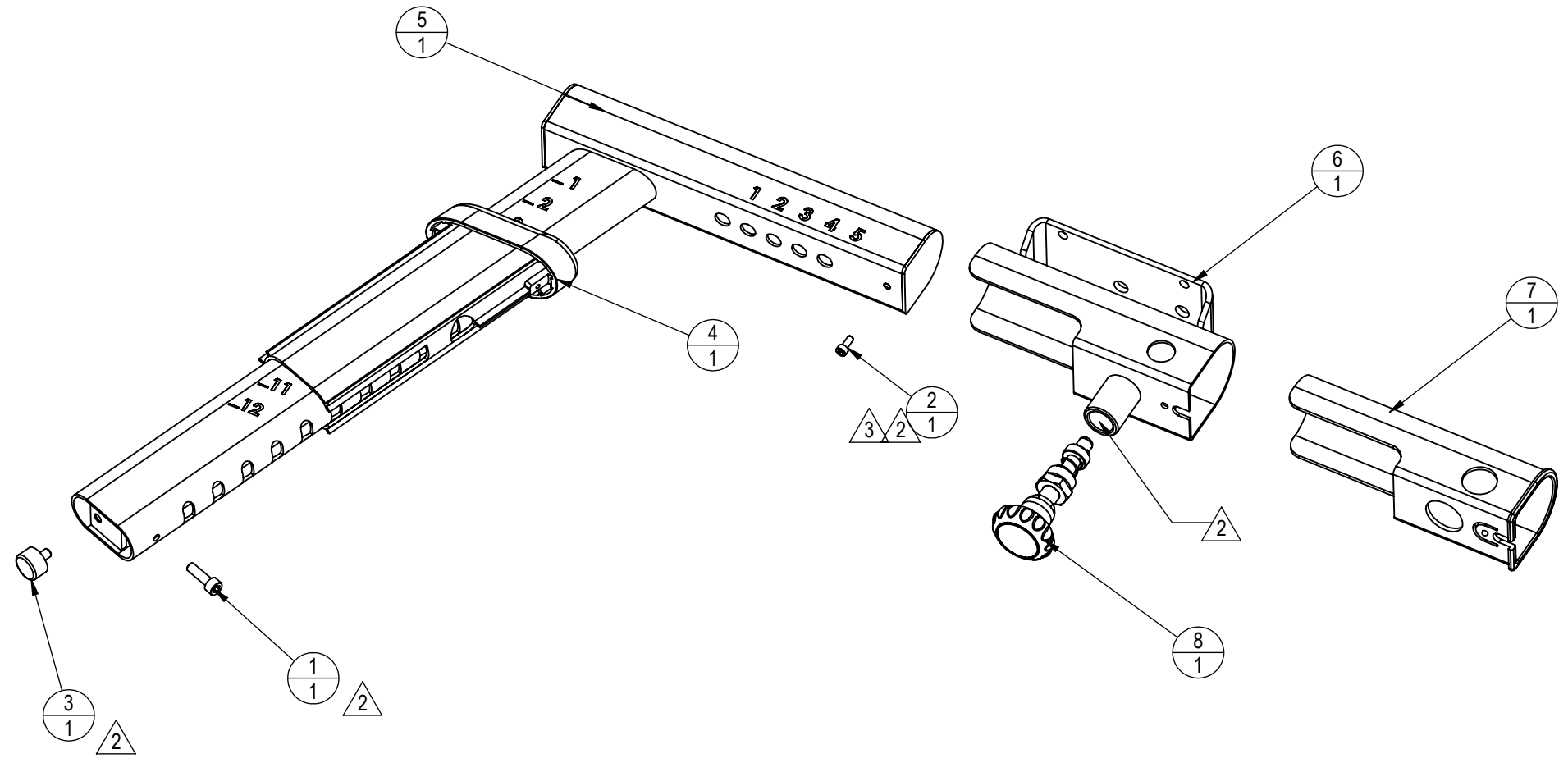
NOTE: CONT.
8. TORQUE TO 17 Nm / 150 Lb-in

CORE HEALTH & FITNESS, LLC 4400 NE 77th Ave., Suite 300 Vancouver, WA 98662		
CORE PART NO	718-5489-XX	REV B
TITLE BASE, ASSY, FAN, BIKE		
SCALE: 1:1	SHEET 6 OF 6	SHEET SIZE: B

NOTES:

1. COLOR DESIGNATION PER-XX SPECIFIED IN SOP 620-8222 UNLESS OTHERWISE NOTED
2. APPLY LOCTITE 243
3. TORQUE TO 3 Nm / 26.5 Lb-in
4. TORQUE TO 7Nm / 62 Lb-in

REVISION HISTORY				
REV	DATE	DESCRIPTION	ECO	BY
A	12/19/2013	PRODUCTION RELEASE	14455	VC



ITEM NO.	PART NUMBER	DESCRIPTION	QTY.
1	110-3171	SCREW, M6x20, SHC, HE, ISO4762	1
2	110-3357	SCREW, M4 X10, SHC, HK, CS, BO, NP	1
3	140-3240	BUMPER, 3/4x7/16x8-32, RUBBER	1
4	718-5381-XX	SLEEVE, SEAT POST, SPORT, AIRBIKE	1
5	718-5404	WELDMENT, SEAT POST, TURBO	1
6	718-5409	WELDMENT, SEAT BASE, TURBO	1
7	718-5413	INSERT, SEAT, SLIDER, TURBO	1
8	718-5497	ASSY, POP PIN, TURBO	1

DOCUMENT STATUS:

NOTICE OF PROPRIETARY INFORMATION
 THIS DOCUMENT SHALL NOT BE REPRODUCED NOR SHALL THE INFORMATION CONTAINED HEREIN BE USED BY OR DISCLOSED TO OTHER EXCEPT AS EXPRESSLY AUTHORIZED BY CORE HEALTH & FITNESS, LLC.

CLASS OF WORK	UNLESS OTHERWISE SPECIFIED DIMS ARE IN mm. TOLERANCES FOR MEASURE OF LENGTH ARE:							ANGLES = ±2°
	0.5 to 3	> 3 to 6	> 6 to 30	> 30 to 120	> 120 to 400	> 400 to 1000	> 1000 to 2000	
FINE	±0.05	±0.05	±0.1	±0.15	±0.2	±0.3	±0.5	----
MEDIUM X	±0.1	±0.1	±0.2	±0.3	±0.5	±0.8	±1.2	±2
COARSE	±0.2	±0.3	±0.5	±0.8	±1.2	±2	±3	±4
VERY COARSE	----	±0.5	±1	±1.5	±2.5	±4	±6	±8

MATERIAL SEE NOTES

FINISH

VENDOR:

P/N:

THIRD ANGLE PROJECTION



DRAWN	INITIAL VC	DATE
CHECKED		
APPROVED		
	U.O.M.	MM

CORE HEALTH & FITNESS, LLC
 4400 NE 77th Ave., Suite 300
 Vancouver, WA 98662

CORE PART NO	REV
718-5376-XX	A
TITLE	
ASSY, SEAT, FAN, BIKE	
SCALE: 1:10	SHEET 1 OF 1
SHEET SIZE: B	